



Bio-Active Bird's Nest Density Essence

Advanced Scalp Revitalizer
& Root Strengthening

- ◆ Visibly Thicker Appearance
- ◆ Root Anchoring Technology
- ◆ Scalp Vitality & Hydration

Note: This product is a cosmetic scalp tonic intended for strengthening hair and improving scalp condition. It is not a drug and is not intended to diagnose, treat, cure, or prevent pathological hair loss (Alopecia). Results may vary.

The Philosophy: Nature's Most Potent Structural Nutrient



Sourced from premium Swiftlet Nests, our essence combines ancient nutritional wisdom with modern Japanese enzymatic extraction technology.

We do not force the scalp to work; we feed it. This is the ultimate luxury nutrition for your hair roots—delivering concentrated bio-active ingredients directly to the scalp's micro-environment.

The result is a harmonious fusion of tradition and biotechnology, designed to maintain the optimal condition of the hair and scalp.

The Power of Hydrolyzed Swiftlet Nest Extract

Rich in Sialic Acid Oligosaccharides (SAO) & NANA

Sialic Acid Oligosaccharides (SAO)
Molecular Structure



Source: A bioactive small molecule extracted from premium-grade edible bird's nest via advanced enzymatic hydrolysis technology.

NANA (N-Acetylneuraminic Acid)

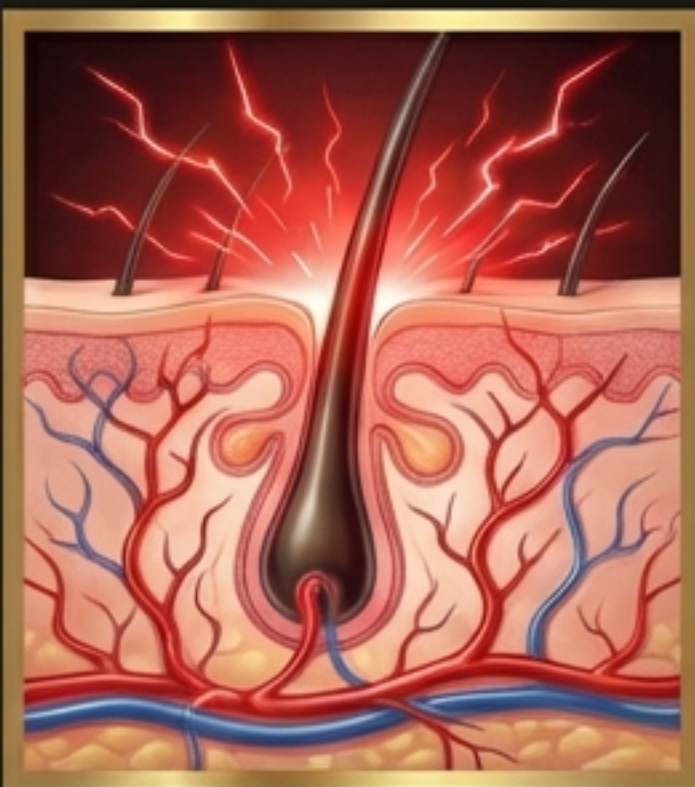
A vital structural nutrient and Natural Moisturizing Factor (NMF) historically prized for its restorative properties. It helps bind moisture to the scalp surface, preventing dryness.

Bio-Availability

Our patented hydrolysis process breaks down the bird's nest into micro-molecules, ensuring deep penetration into the stratum corneum to lock in hydration and fortify the hair root.

Structural Fortification vs. Temporary Stimulation

The Stimulation Model (Traditional Chemicals)



Like whipping a tired horse. It forces activity temporarily but leaves the scalp exhausted.

The result is a surface-level reaction that fades immediately when usage stops, often leading to a 'crash' in condition.

The Nourishment Model (Our Technology)



Like watering and fertilizing barren soil. We revitalize the scalp environment, creating optimal conditions for hair to thrive naturally.

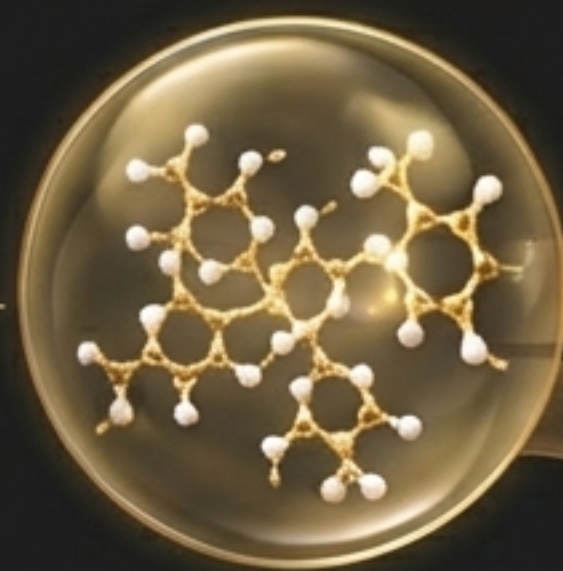
This builds a healthy, self-sustaining micro-ecosystem that supports long-term hair vitality.

The Dual-Action Nourishing System

Action 1: Environment Optimization

Delivers intense hydration to the stratum corneum, reducing dryness and flakiness.

Concentrated SAO & NANA Nutrient Complex



Action 2: Root Anchoring Technology

Binds to the hair shaft and follicle opening to physically strengthen the anchor point and reduce breakage.



Safety is the Ultimate Luxury



Non-Drug Formula

Free from Minoxidil,
Finasteride, and harsh
hormones.



Toxicology Tested

Passed rigorous safety
tests; non-toxic and
non-irritating.



Zero Dependency

No 'withdrawal shed'
upon stopping use.



Daily Safe

Gentle enough for
everyday application, just
like premium skincare.

The Density Multiplication Effect

Enhancing Visual Volume

Existing Hairs Fortified

Strengthens fine, vellus-like hairs to appear thicker and more robust.



**VISUAL VOLUME
ENHANCEMENT**

Fuller Appearance

Reduces breakage and shedding, helping to maintain overall density.

Texture Improvement

Hair feels stronger, smoother, and more resilient.

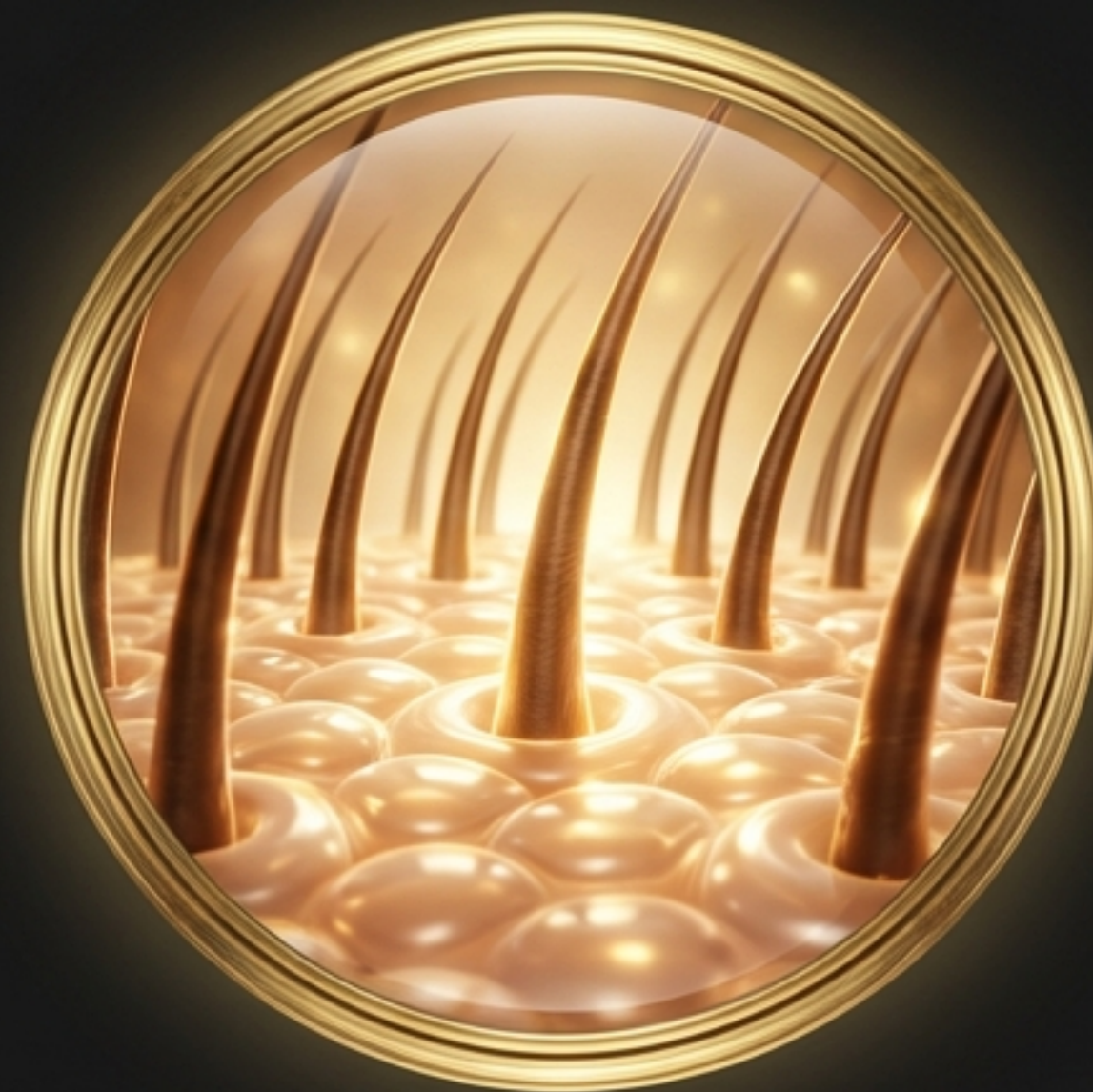
Visual representation of density improvement concepts. Individual results vary.

A Transformation in Scalp Ecology

Optimizing the Micro-Environment for Healthy Hair



Before: Dry, Clogged, or Stressed Environment



After: Hydrated, Clean, and Nourished

A healthy scalp is the foundation of beautiful hair. Our essence clears the path for vitality by hydrating the skin and removing environmental stressors that stifle the roots.

Redefining the Hairline



Before Application



After Consistent Application

The hairline is often the first area to show signs of stress and aging. Our precision applicator allows for targeted nourishment in these delicate areas. Visible improvement in the appearance of hairline density can be observed as fine baby hairs appear thicker and more robust.

Photos for illustration of visual improvement only. Results depend on individual scalp condition.

Why Choose Bio-Active Nutrition?

	Our Essence (Bio-Cosmetic)	Chemical Stimulants	Transplants
Core Logic	Deep Nourishment	Forced Stimulation	Surgical Relocation
Safety	High (Cosmetic Grade)	Potential for Irritation	Invasive Risks
Dependency	None	High (Relapse Risk)	Maintenance Required

A Daily Ritual for Scalp Vitality



1.

APPLY

Twice daily (Morning and Night) to dry or damp scalp.

2.

FOCUS

Target areas of concern such as the hairline, parting, and crown.

3.

MASSAGE

Gently massage for 1 minute to aid absorption. Do not rinse.

"Treat your scalp with the same care you treat your face. Consistency is the key to lasting volume."

Welcome to the Era of Bio-Active Scalp Care

The safe, luxurious path to thicker-looking, resilient hair

Move beyond harsh chemicals.
Embrace the structural power
of Bird's Nest Essence.

www.scit-holdings.com

